



# GMT MONTHLY MEMBERSHIP PROGRESS REPORT

Results as of: 5/31/2024

Multiple District 318

LOCATION: INDIA

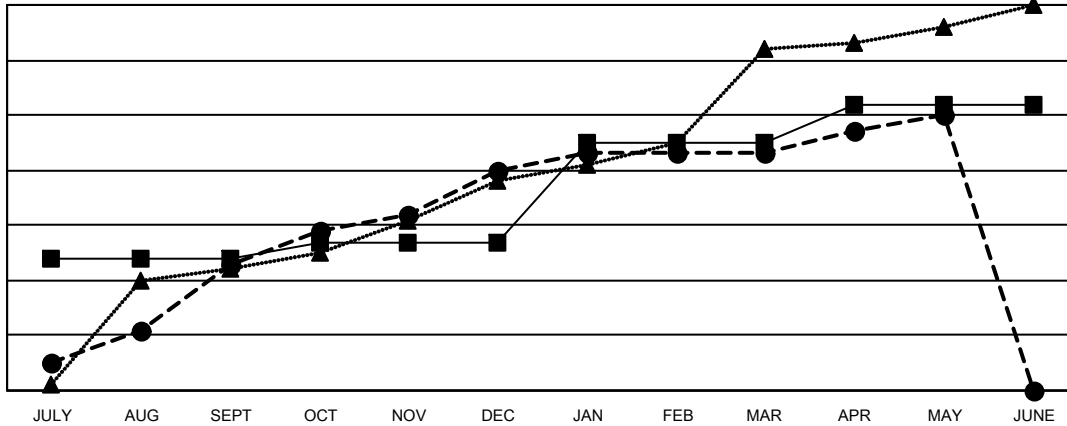
GMT: OPEN

GMT CA 6 - I

Clubs			
RESULTS FOR 2023-2024			
QUARTER	NEW CLUB GOAL	NEW CLUBS	DROPPED CLUBS
JULY/AUG/SEPT	24	23	3
OCT/NOV/DEC	3	17	19
JAN/FEB/MAR	18	3	8
APR/MAY/JUNE	7	7	4

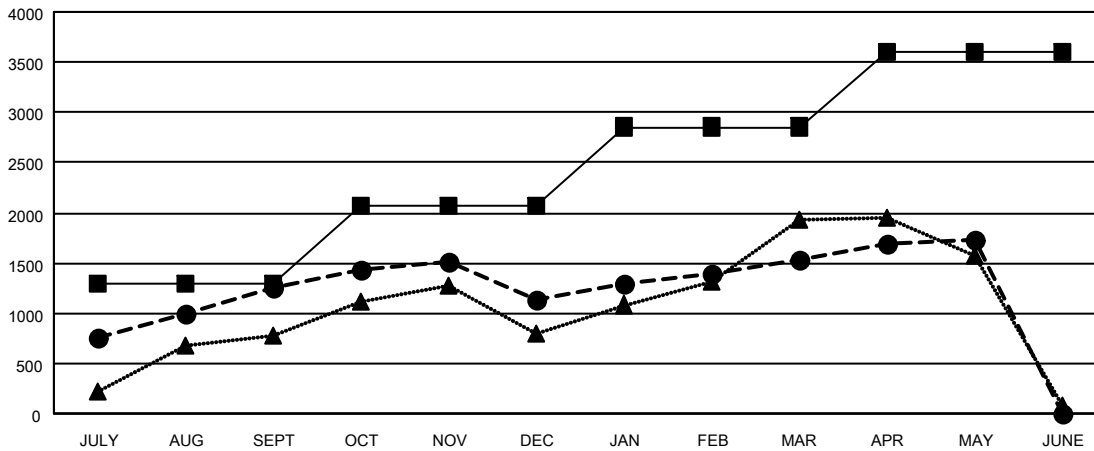
Members			
RESULTS FOR 2023-2024			
QUARTER	MEMBER GROWTH NET GOAL	MEMBER GROWTH ACTUAL	DROPPED MEMBERS ACTUAL (including transfers)
JULY/AUG/SEPT	1,295	2,007	635
OCT/NOV/DEC	770	1,099	1,193
JAN/FEB/MAR	790	782	323
APR/MAY/JUNE	745	447	219

GOALS AND ACTUAL NEW CLUBS CUMULATIVE



- - CURRENT YEAR GOALS FOR NEW CLUBS
- - CURRENT YEAR ACTUAL NEW CLUBS
- ▲ - LAST YEAR ACTUAL NEW CLUBS

GOALS AND ACTUAL MEMBERS CUMULATIVE



- - MEMBER GROWTH NET GOAL
- - MEMBER GROWTH ACTUAL
- ▲ - LAST YEAR MEMBERSHIP ACTUAL

DROPPED CLUBS: 34	585 CLUBS OF 845 ADDED 1 OR MORE NEW MEMBERS	<b>GENDER DISTRIBUTION</b>
		MALE 22,245 (81.73%)
		FEMALE 4,974 (18.27%)
<b>DROPPED MEMBERS</b>	<a href="#">CLICK HERE FOR CUMULATIVE MEMBERSHIP DATA</a>	TOTAL FAMILY UNIT MEMBERS 8,384
DECEASED 84		FAMILY MEMBERS PAYING HALF DUES 4,420
CLUB CANCELLED 488		
OTHER 1,796		
<b>TOTAL 2,368</b>		